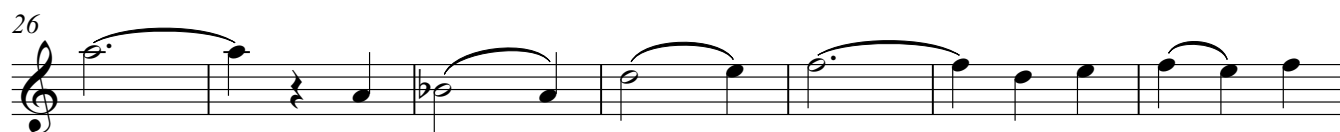


## 4. Ershter Vals

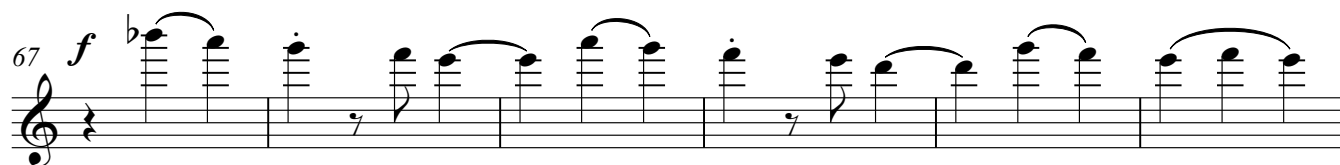
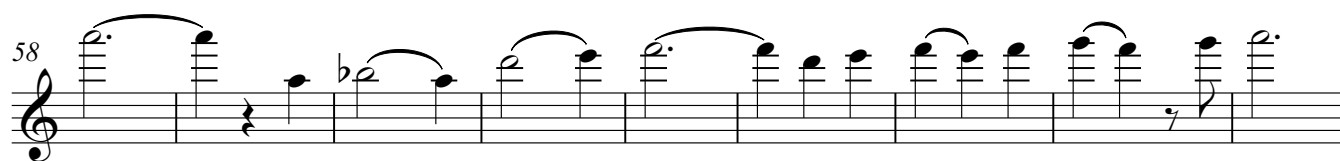
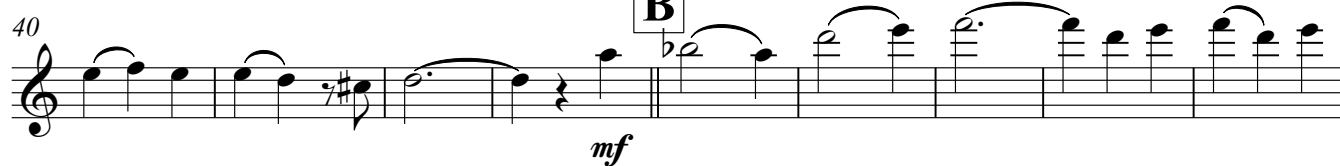
Arr.: Joachim Johow 2007

Vivace  $\text{♩} = 72$ 

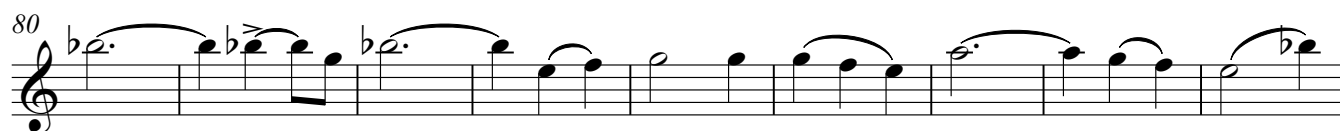
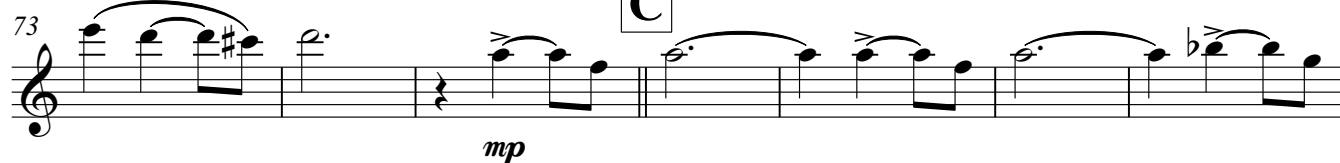
A



B



C



Flöte

89

95

100

108

113

118

124

131

139

143

*f*

*f*

*mp*

The musical score for the Flöte part, measures 89-143, is presented in a single system. The notation is in treble clef with a key signature of one flat (B-flat). The score includes various musical notations such as eighth notes, quarter notes, and half notes, often beamed together in groups. Dynamic markings include *f* (forte) and *mp* (mezzo-piano). A section marked with a box and the letter 'D' begins at measure 108, and another section marked with a box and the letter 'E' begins at measure 139. The score concludes with a double bar line at measure 143.